



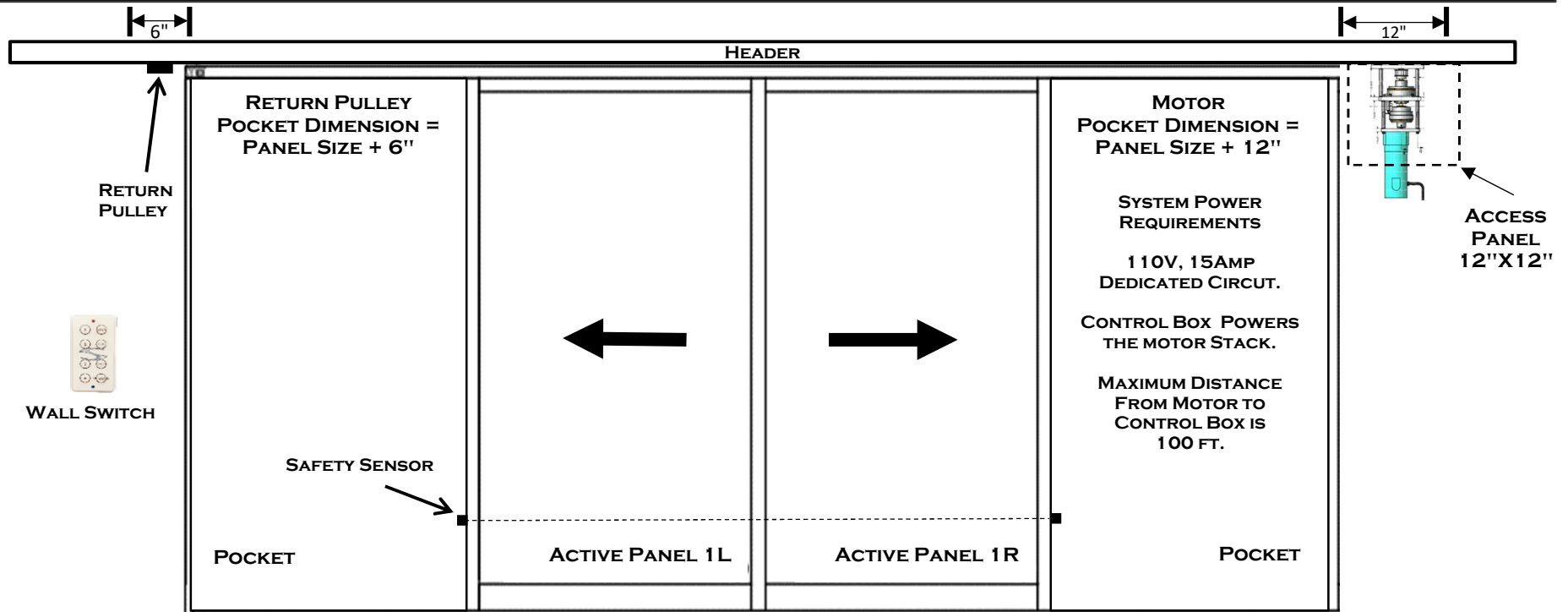
# SUMMIT AUTOMATION

## POCKETING BI-PART SPECIFICATION

### HEAD TRACK BELT TRAVEL



### PRODUCT LOCATIONS



**PANEL NOTES:** THE NUMBER OF PANELS OUR SYSTEM CAN AUTOMATE IS UNLIMITED. FROM TWO PANELS TO TWELVE WE'VE GOT YOU COVERED. WOOD CLAD, ALUMINUM, OR STEEL IF IT SLIDES WE CAN AUTOMATE IT.

**MOTOR NOTES:** MOTOR CAN BE MOUNTED EITHER SIDE IN THE POCKET WITH A MINIMUM OF 4" AWAY FROM THE BACK SIDE OF THE PANELS WHEN RETRACTED.

**RETURN PULLEY NOTES:** RETURN PULLEY MOUNTED OPPOSITE MOTOR SIDE IN THE POCKET WITH A MINIMUM OF 4" FROM THE BACK SIDE OF THE PANELS WHEN RETRACTED.

THESE ARE TYPICAL INSTALLATION LOCATIONS BASED ON THE CONFIGURATION SHOWN. CONTACT US TO DISCUSS ALTERNATIVE INSTALLATION OPTIONS FOR THIS CONFIGURATION.

**CALL OR SEND US AN EMAIL WITH ANY QUESTIONS: 480.500.5468 - SUMINFO@SUMMITAUTOMATION.COM**